

BEAUTIFUL, WELL-BUILT OUTDOOR PAVILIONS

IDEA & DESIGN GUIDE



AMERICAN
LANDSCAPE STRUCTURES



WELCOME



"We had our pavilion installed in May of 2021. Took about 3 months from order to installation. We couldn't be happier with the quality, customer service and professionalism of the entire sales and assembly team."

– Dave G, Cranbury, NJ

Now Is The Perfect Time To Create Your Memorable Outdoor Living Space

You've worked hard to enjoy the backyard of your dreams.

More than that, you want to provide your family and friends with a beautiful and unique space to relax and enjoy spending time with one another. You can practically hear the laughter and good times coming from your new pavilion already.

Your job is to dream. Our job is to make that dream become reality.

We're Pavilion Specialists

From the very first time you connect with us (via phone or online), American Landscape Structures is here to help and serve you. Whether it's assisting in your best selections, helping you hammer out the details, or anything else you need along the way, consider us your on-call dream specialists.

Relax and Enjoy the Journey

We understand that any construction project can be stressful and overwhelming. We've helped hundreds of customers design, build, and enjoy their dream pavilions and we look forward to helping your dream backyard become reality, too.



HOW WE WORK TOGETHER



Growing up, my Mom and four of us kids lived in a 1,200 square foot three-bedroom, one-bath home just inside the Washington, DC Beltway. We always looked forward to the spring when we could kick off our shoes and spend more time outdoors. We would cook and eat out on this concrete patio, and the five of us would sit on this block wall eating on our TV trays. There were many good memories made out on that back patio.

Lots of things have changed since then. At our current home, our back patio would get smoking hot in the afternoons - much too hot to enjoy. So we'd stay inside in the a/c in the summertime. Then we discovered these things called pergolas. And American Landscape Structures was born.

Jim Adams, Owner



STEP 1

DESIGN & DETAILS

We'll walk you through the design process of your dream pavilion keeping your home, budget, and preferences in mind.



STEP 2

DECIDE & AGREE

We'll help you finalize and document your selections, including answering your questions about pricing and process.



STEP 3

BUILD & ENJOY

Let's get started! We'll get to work to ensure you're enjoying your dream pavilion on time and on budget.

1

STEP 1 DESIGN & DETAILS

The design process starts as soon as you call American Landscape Structure or complete the online Quote Request form at AmericanLandscapeStructures.com. From day one, you'll be assigned an experienced design consultant to walk you through the entire process.

Some of the subjects you might discuss with your design consultant:

- THE WAY THE SUN ARCS ACROSS YOUR YARD.
- WHAT YOU IMAGINE WILL BE UNDER YOUR PAVILION.
- WHERE YOU ENVISION YOUR FAMILY AND GUESTS WILL BE INSIDE THE PAVILION.
- WHAT LOOK OR CHARACTER BEST MATCHES THE SURROUNDINGS.
- YOUR OVERALL PROJECT BUDGET. (COMPLETELY UP TO YOU.)

You can also come to your consultant with design ideas for the style and type of structure you prefer. This guide provides you with thousands of ideas and possibilities for your pavilion. Let your imagination run and your consultant will be there to guide you through the process.

The design consultant will also help you navigate other details, such as permitting, foundations, electrical (if applicable), and so on.

EXTERIOR MATERIALS



WOOD



VINYL

POST/COLUMN



STANDARD



SUPERIOR



8" SQUARE



10" ROUND



STANDARD



SUPERIOR



8" SQUARE

MODELS



TRADITIONAL



HAMPTON



CUSTOM



NEWPORT

ROOF STYLE



HIP



A-ROOF/GABLE

ROOFING MATERIALS



SHINGLES



METAL



CEDAR SHAKES

CUPOLA



WEATHERVANE



ELECTRIC



Design Check List

Dimension of the space you want covered by the pavilion: _____ feet by _____ feet

Exterior material:

☐ Wood ☐ Vinyl

Posts/Columns:

☐ Standard ☐ Superior

☐ Upsize Square ☐ Round Column

Model:

☐ Traditional (Wood or Vinyl)

☐ Hampton (Vinyl only)

☐ Custom (Wood or Vinyl)

☐ Newport (Wood or Vinyl)

Roof Style on Traditional Model:

☐ Hip 4 sided ☐ A Roof/Gable/2-sided

Roofing Materials:

☐ Shingles (standard)

☐ Ribbed Metal/Standing Seam

☐ Rubber Slate

☐ Cedar Shakes

Roofing Color Choice: (see page 52)

Stain Color: (see page 53)

_____ (stained on ceiling of vinyl)

Cupola: (see page 55)

☐ Yes ☐ No

Electric:

☐ Yes ☐ No

_____ Number of switches

_____ Number of outlets

2

STEP 2 DECIDE & AGREE

Your design consultant will be your guide through the entire process.

Now that you've figured out your preferences for the design and details of your pavilion, it's time to get down to brass tacks.

At this point, the design consultant will be your guide to help you balance three important factors: your dream, your budget, and our production team.

Before you put pen to paper, we'll help you optimize your design together based on what's most important to you. We'll offer you multiple proposals and discuss the pros and cons of each. We'll also show you the proposed timeline for your project.

Once you are confident in your design and budget decisions, we'll put everything down in writing on a very simple agreement using layman's terms.



COMPUTER RENDERING OF PAVILION. (OPTIONAL \$)



TRADITIONAL PAVILION, 14' X 24' WITH 10" ROUND COLUMNS.



Your project now gets passed from your design consultant to one of our project managers. You'll have a phone call with your PM to ensure a smooth transition.

Your project manager can also answer any questions that may have arisen and provide your estimated completion date (On site assembly typically only takes a day or two).

Your project manager will coordinate with you as well as any additional contractors that you've hired onto the project, including engineers, masons, or electricians as well as with our in-house production and scheduling teams. Their goal is to make the entire process as easy and stress-free for you as possible.

Before you know it, you'll be sitting under the shade of your backyard pavilion and enjoying the comfort and beauty you and your family deserve.

Here's why we received an A+ BBB rating and 50+ Verified TrustPilot Reviews:

- ✓ Reasonably priced custom design features while still maintaining the value of shop-fabrication.
- ✓ Reliable turnaround times you can count on.
- ✓ Continually refined 31-step checklist triple checked by our top-flight staff with regular updates.
- ✓ Kit option for self-assembly or by your local contractor.
- ✓ Superior quality fit and finish with very minimal trimming required.
- ✓ Extremely accurate results due to photos and drawings on file.
- ✓ World-class design consultants have overseen over 1,000 projects making the process easier and less stressful for you.
- ✓ Top quality materials and construction practices proven in the field for decades.
- ✓ Well-prepared, knowledgeable, and respectful field crews you would recommend to your closest friends and family.



DELIVERABILITY:

No matter where you are in the U.S., we ship Pavilion kits direct from the factory all over the country from Florida to Maine to Texas to California.



VINYL PAVILIONS

Nearly Limitless Possibilities Without Re-Inventing the Wheel

This catalog contains a wide variety of design examples to use as inspiration. You can also find photo galleries and other project ideas to help you get started at AmericanLandscapeStructures.com. Your design consultant will share selections from our massive photo and drawing library to help you visualize what YOUR pavilion is going to look like.

Incomparable Value With High Quality Finishings

Your vinyl pavilion will be uniquely yours AND take advantage of pre-engineered designs and a highly efficient production operation located in Lancaster County, PA. These designs exceed the most demanding code and load requirements. And you can count on extraordinary finish quality.



SHOWN: 16' X 20' HAMPTON PAVILION WITH 10" ROUND POSTS.



SHOWN: VINYL PAVILIONS.



SHOWN: 24' X 50' WINDSOR PAVILION WITH VINYL GABLE VENTS.

Why Vinyl?

Low maintenance mostly - but it depends upon you. Style and texture are also very important factors. We use the highest quality materials that have proven themselves in the field for 40 years. Cost? Vinyl is more initially but you'll recoup that within about 10 years because it doesn't need to be refinished. The wood ceiling is out of the weather and may just need a little touch-up now and then.

Visualize in 3D

If your organization has a capital campaign and like Windsor Church in Windsor, Virginia, your group wants to see what your structure will look like on your property, we'll have a 3D rendering completed for you for qualified/committed clients for a reasonable fee.



SHOWN: 14' X 16' WHITE VINYL PAVILION, 10" ROUND COLUMNS.

A modest but elegant pre-designed pavilion is all you need to be able to watch your games, your kids, and your burgers all at the same time. This simple style is available in fixed sizes running every 2 feet from 8' X 10' and up with plenty of opportunities for personalization. They are made with the same quality materials, finish standards, and construction methods as our custom pavilions.



TRADITIONAL VINYL PAVILIONS

Posts/Columns

Standard: 6" x 6" Square treated posts with vinyl sleeves and trim sets.

Optional: up size 8" vinyl, superior post skirts (not available on 8"), 10" round columns, 10" square fiberglass posts



Roof Overhang/Pitch

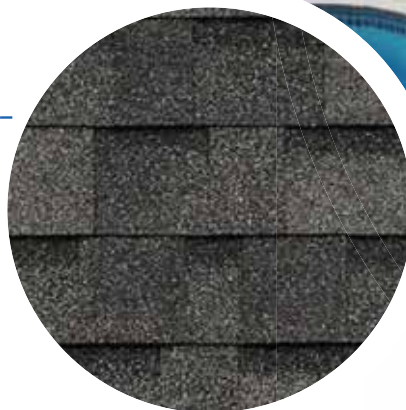
Standard: 7" on 8'-14',
10" on 16' and above,
6" over 12" roof pitch



Roofing

Standard: Architectural asphalt shingles,
limited lifetime warranty

Optional: ribbed metal,
standing seam metal,
cedar shakes, rubber slate



Ceiling

Standard: stained tongue & groove with exposed rafters
with your choice of 6 stain colors

Custom: beaded vinyl or tongue & groove under rafters





Cupolas

Standard: No cupola

Custom: vinyl vented cupola vinyl glass cupola

- copper, metal or shingle roof
- special order weathervane options available at

www.cupolacreationspa.com and www.gooddirections.com



Optional Electric

Switches, outlets, wiring to order.



Anchoring Method

Standard: mounted with 2 heavy duty L-brackets per post, each with 1/2" x 4" drill-in anchors covered with post base trim



Beam Height

Standard: 7' 4" - 7' 10" depending on size

Custom: Increase is 12" increments

TRADITIONAL VINYL PAVILIONS



We Had Just The Right Model In Stock

It was almost Springtime - Having contacted their local provider which had almost 6 month lead times, Tiffany and John in Centreville, Virginia understandably didn't want to wait until Fall for their pavilion to be completed. American Landscape Structures came through and they were able to enjoy their pavilion for the Summer.

SHOWN: 12' X 16' TRADITIONAL VINYL PAVILION WITH CUSTOM CUPOLA.



SHOWN ABOVE: 18 X 18', WHITE VINYL, CUPOLA WITH CUSTOM WEATHER VANE.

Your Vision - Your Design

Many of our customers are looking for something you won't find in any online builder or off-the-shelf pricelist. The pavilion above is just such an example. Joan, a homeowner on Eastern Long Island stated "20' x 20'" on her request.

Knowing What Questions to Ask - We Dug Deeper.

We didn't take her first request at face value -. A 20' x 20' Pavilion - by the way - is \$5,000 more than an 18' x 18' Rob, our design consultant knew had a 19' x 19' roof - perfect for Joan's space. To cap things off - when it turned out the standard square cupola didn't stand up to this grand pavilion, we had a special order one made for her and sent a crew to replace the original at no additional charge.



12' X 14' VINYL PAVILION WITH CUSTOM 12" ROOF OVERHANG AND 8" POSTS

TRADITIONAL VINYL PAVILIONS



12' X 16' WHITE VINYL TRADITIONAL PAVILION WITH 8" X 8" SQUARE POSTS



"The Sun in the Afternoon Is Brutal"

Wes and his wife Karen had owned their new home in Central New Jersey for 3 years and had been dreaming about what to do with their "blank slate" of a backyard. The sun in the afternoon was brutal. If you think it doesn't get hot up North in the Summertime, talk to Wes and Karen. It doesn't stay hot as long during the year - but believe me - it gets smoking hot as early as May and as late as September.

They were working with a local landscape contractor on a design which included among other things - a pavilion to cover their outdoor living room. The covered space included an elegant but functional outdoor living room set accented by some nice lighting inside and out. We helped them by providing outlets and switches and hiding wires during construction.

Our team worked with their landscape contractor and electrician to coordinate the details and scheduling. Everything on the site was all set by late August - September they were enjoying their new outdoor living room, just in time for school.





SHOWN ABOVE: 16' X 20' TRADITIONAL VINYL PAVILION

Charm & Character

Joan from Hop Bottom, PA after working with us in 2018 is still one of our most loyal fans staying in touch and encouraging us on social media. You may remember seeing this image a couple of different spots on the website. This particular picture really doesn't do it justice. What's really striking is how it looks from the inside out. The environment and scenery from this vantage point is absolutely breathtaking - only accented by the charm and character of the space itself.

HAMPTON VINYL PAVILIONS

Arched beams are the most distinctive and unique feature.

Posts/Columns

Standard: Choice of 10" round columns or 8" square posts.



Roof Overhang/Pitch

Standard: Hip style roof, 7.5" over 12" roof slope, 12" overhang



Roofing

Standard: Architectural asphalt shingles, limited lifetime warranty

Optional: ribbed metal, standing seam metal, cedar shakes, rubber slate



Ceiling

Standard: stained tongue & groove with exposed rafters with your choice of 6 stain colors

Custom: beaded vinyl or tongue & groove under rafters



Cupolas

Standard: No cupola

Custom: vinyl vented cupola vinyl glass cupola

- copper, metal or shingle roof
- special order weathervane options available at

www.cupolacreationspa.com and www.gooddirections.com

Optional Electric

Switches, outlets, wiring to order.

Anchoring Method

Standard: mounted with 2 heavy duty L-brackets per post, each with ½" x 4" drill-in anchors covered with post base trim

Beam Height

Standard: 7' 4" - 7' 10" depending on size

Custom: Increase is 12" increments



HAMPTON VINYL PAVILIONS



SHOWN ABOVE: 16 X 20 HAMPTON VINYL PAVILION.

A Striking Visual Statement of Luxury and Beauty

The Hampton Model Pavilion's ability to draw one's eye from blocks away is undeniable. If what you truly desire is a striking statement of luxury and beauty, the Hampton delivers. Numerous upgrades are packaged together into one complete - upscale design.

Our Amish craftsmens' abilities are used to their fullest in the shop and the field with the expert execution of the arched beam - the most distinctive and unique feature of the Hampton Model.

Subtle Enhancements Create More Stature

The other unique features are more subtle. Dentil moulding is included under the vinyl clad soffit. Can you see how the steeper slope of the roof gives the Hampton more stature? Or how the slightly wider roof overhang achieves a richer look?

Your choice of 8" square posts or 10" round columns - popular upgrades on our traditional model are included as standard with the Hampton. Our pavilion owners love the expertly crafted raised panel trim at the post-beam connection.





SHOWN ABOVE: 12 x 16 HAMPTON VINYL PAVILION.

“We moved to Marleton, NJ where we had torn down a house and built our new home. First time ever I had a pool and I always wanted a pavilion outback for my pool so I started looking online for a couple of companies. I called and left a message - as a business man in construction myself with 21 employees I needed to have answers with no nonsense. Jim was honest, I didn't want to have to haggle - the pricing was where I wanted it. And the responsiveness was amazing.

The craftsmanship and the employees - there were three young gentlemen that built this thing in one day. Beyond top notch. I recommended American Landscape Structures to three different people. They went above and beyond.”

– Anthony P., Marleton, NJ



CUSTOM VINYL PAVILIONS

Posts/Columns

Standard: 6" X 6" square treated posts with vinyl sleeves and trim sets

Custom: upsized 8" posts, superior post skirts (not available on 8") round columns, 10" square fiberglass posts



Roof Overhang/Pitch

Standard: 7" on 8' - 14',
10" on 16' and above.,
5 ¼ " to 12" roof pitch



Roofing

Standard: Architectural asphalt shingles, limited lifetime warranty

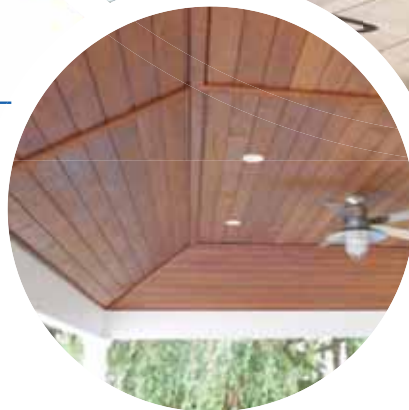
Optional: ribbed metal, standing seam metal, cedar shakes, rubber slate



Ceiling

Standard: stained tongue & groove with exposed rafters with your choice of 6 stain colors

Custom: beaded vinyl or tongue & groove under rafters



Cupolas

Standard: No cupola

Custom: vinyl vented cupola vinyl glass cupola

- copper, metal or shingle roof
- special order weathervane options available at www.cupolacreationspa.com and www.gooddirections.com

Optional Electric

Switches, outlets, wiring to order.

Anchoring Method

Standard: mounted with 2 heavy duty L-brackets per post, each with 1/2" x 4" drill-in anchors covered with post base trim

Beam Height

Standard: 7' 4" - 7' 10" depending on size

Custom: Increase is 12" increments



CUSTOM VINYL PAVILIONS



"Just finished building a high-end 6,000 sq. ft. new construction home. The ONLY contractor that delivered painless and superb service was American Landscape Structures...extremely patient and professional at helping us design the perfect pavilion for our 20'x 20' outdoor kitchen. Would use them again in a heartbeat!"

– Niki P, Old Brookville, NY

To you, it just seems like good business to offer exceptional customer service, communicating clearly every step of the way and then delivering on your promises. [Why then does that kind of care seem to be so rare?](#)

Niki and Joe got a massive surprise when their contractor quoted them over \$35,000 for a simple pavilion to cover their outdoor kitchen and bar area. Then they contacted American Landscape Structures. Not only did we over-deliver on the pavilion they envisioned, we saved them \$15,000.



You Shouldn't Have to Settle Your Pavilion Should Fit YOUR Vision and Space

Chris didn't want a center post obstructing the view and knew that it would just look better without it in his space. He had been told that 22' was too long of a span to not have a center post. Then he called American Landscape Structures. Since we specialize in pavilions - we knew better and had the solution he needed.



SHOWN ABOVE: 16' X 24' CUSTOM HAMPTON STYLE PAVILION
WITH 8" X 8" POSTS

No Matter What Your Budget,
if it's \$30,000 or \$10,000 -
You Need A Team On Your Side
That Knows What Questions
To Ask and Truly Listens.

John and Julia had worked hard for years so they could build their dream home. Part of their plans included a beautiful and comfortable outdoor living area. Julia in particular wanted something extraordinary - but the quotes they were getting were just crazy - over \$50,000. Totally outrageous. This home was going to be THEIR home. They didn't want to settle for an off-the-shelf design. They needed the right partner that could both design and build the pavilion for a more reasonable cost.



If What You Truly Desire Is Something Uniquely You - You Don't Have to Pay Ridiculous Prices To Reinvent The Wheel or Settle For Off-The Shelf "Models."

John contacted American Landscape Structures - and their design consultant Jim helped them work through multiple variations to create a design they could both be thrilled with. This design was not in any "design-your-own" tool or standard price list. And to get their permit, they needed sealed/certified drawings that accounted for the sitting wall and the fireplace. Many of the design details and construction methods are standardized both streamlining the design process and reducing the overall cost.

As their patio area was being completed - a couple of weeks later, the crew - led by Jonas - arrived and worked into the evening to complete what you see in the adjacent photos. And for under \$25,000 (2018). We came back months later once their landscaping and their outdoor living area was complete to take the photos you see here.





Water skiing is
even better with an
audience



Just above the Housatanic Dam in Connecticut you can see for yourself is a perfect spot for a morning ski. The Millers had a vision for a brand new dock which included a pergola/pavilion combo - and the tight fit required custom design and drawings. We still leveraged the same materials and joinery of our pre-designed pavilions saving them thousands in design and engineering costs.

CUSTOM VINYL PAVILIONS



SHOWN ABOVE: 14' X 16' CUSTOM PAVILION, 24" OVERHANG, WEATHERED SHINGLES.



For this Middletown New Jersey Project, Paul R. the homeowner had planned for a living room and bar area and the off-the-shelf designs just weren't going to work. Paul started with the place just down the street and had also started calling around but was having a hard time finding someone that didn't have to check with their manager - and he just wasn't getting the response he wanted.

Finally - Paul found us - we got right back to him with the answers he needed that we could absolutely do the 24" roof overhang for a reasonable cost. This meant the roof would end up being 18' x 22' - we made it happen for him. And as you can see - the result speaks for itself. If you look at the photo on the lower left - you may not notice how we did the beam reveal so the roof line wouldn't be covering it up. Not the easiest way to do it. Or the cheapest. But it was well worth it - Paul was thrilled with his new space and was kind enough to send us 15 beautiful high resolution photos for our marketing.



SHOWN ABOVE: 14' X 24' VINYL PAVILION, 8" SQUARE POSTS.

This simple but elegant 14' x 24' vinyl pavilion is another example of how slight modifications can be used to create additional stature and depth without dramatic cost escalations. Fancy models with all the bells and whistles run thousands of dollars more for this size range. Simply increasing the roof pitch slightly and selecting the 8" square posts makes this pavilion stand out and stand up to the luxury of its surroundings.





A-Frame Vinyl Pavilion

Just what is a "Hip", "A-Style" or "Gable-End" roof? Most of the photos you see in this guide are "Hip" style or 4-sided. Rectangular hip style roof structures have a ridge running the long direction. Square hip style roofs come to a point.

"A-Style" and "Gable-End" are synonymous. The "A" stands for the shape above the beams. The structure you see here with the struts is a "gable."

For many years, Amish woodworking companies featured hip style roofs because of their experience crafting wood gazebos in various shapes and sizes. Most craftsmen find hip style roofs a bit intimidating, especially if the compound joints in the ceiling are going to be exposed as these are. Making it look clean - like cabinetry or furniture - requires extraordinary precision and care.

We've been making "A-Roof" structures by special request and had been getting enough enquiries to add to the product line in 2019.



SHOWN ABOVE: 16' X 14' VINYL A-FRAME PAVILION.

Posts/Columns

Standard: 6" x 6" Square treated posts with vinyl sleeves and trim sets.

Optional: up size 8" vinyl, superior post skirts (not available on 8"), 10" round columns, 10" square fiberglass posts



Roof Overhang/Pitch

Standard: 12" 7.5" over 12" roof pitch



Roofing

Standard: Architectural asphalt shingles, limited lifetime warranty

Optional: ribbed metal, standing seam metal, cedar shakes, rubber slate



Ceiling

Standard: stained tongue & groove with exposed rafters with your choice of 6 stain colors

Custom: beaded vinyl or tongue & groove under rafters





Cupolas

Standard: No cupola

Custom: vinyl vented cupola vinyl glass cupola

- copper, metal or shingle roof
- special order weathervane options available at

www.cupolacreationspa.com and www.gooddirections.com



Optional Electric

Switches, outlets, wiring to order.



Anchoring Method

Standard: mounted with 2 heavy duty L-brackets per post, each with 1/2" x 4" drill-in anchors covered with post base trim



Beam Height

Standard: 7' 4" - 7' 10" depending on size

Custom: Increase is 12" increments

NEWPORT VINYL PAVILIONS







LARGE VINYL PAVILIONS



“As pastors, elders and entire church family, we want to thank you and your company so much for building us such an amazing pavilion. It is very solid and surprisingly beautiful.

As project manager, I want to express special appreciation to you Jim. You have been a joy to work with. You did a masterful job of guiding us through all the decisions we need to make to help get the best finished project possible at the most reasonable cost.

I was also impressed with your work crew who built our pavilion this past Tuesday. They worked hard and were very careful and precise to make sure everything was done correctly.

Lord willing, we're looking forward to using it for our upcoming vacation bible study.”

Living by His grace,
Pastor Galen Wiley



SHOWN ABOVE: TRADITIONAL WHITE PAVILION, 20' X 40',
WITH 8" POSTS.



SHOWN ABOVE: HAMPTON MODEL PAVILION, 20' X 40'.

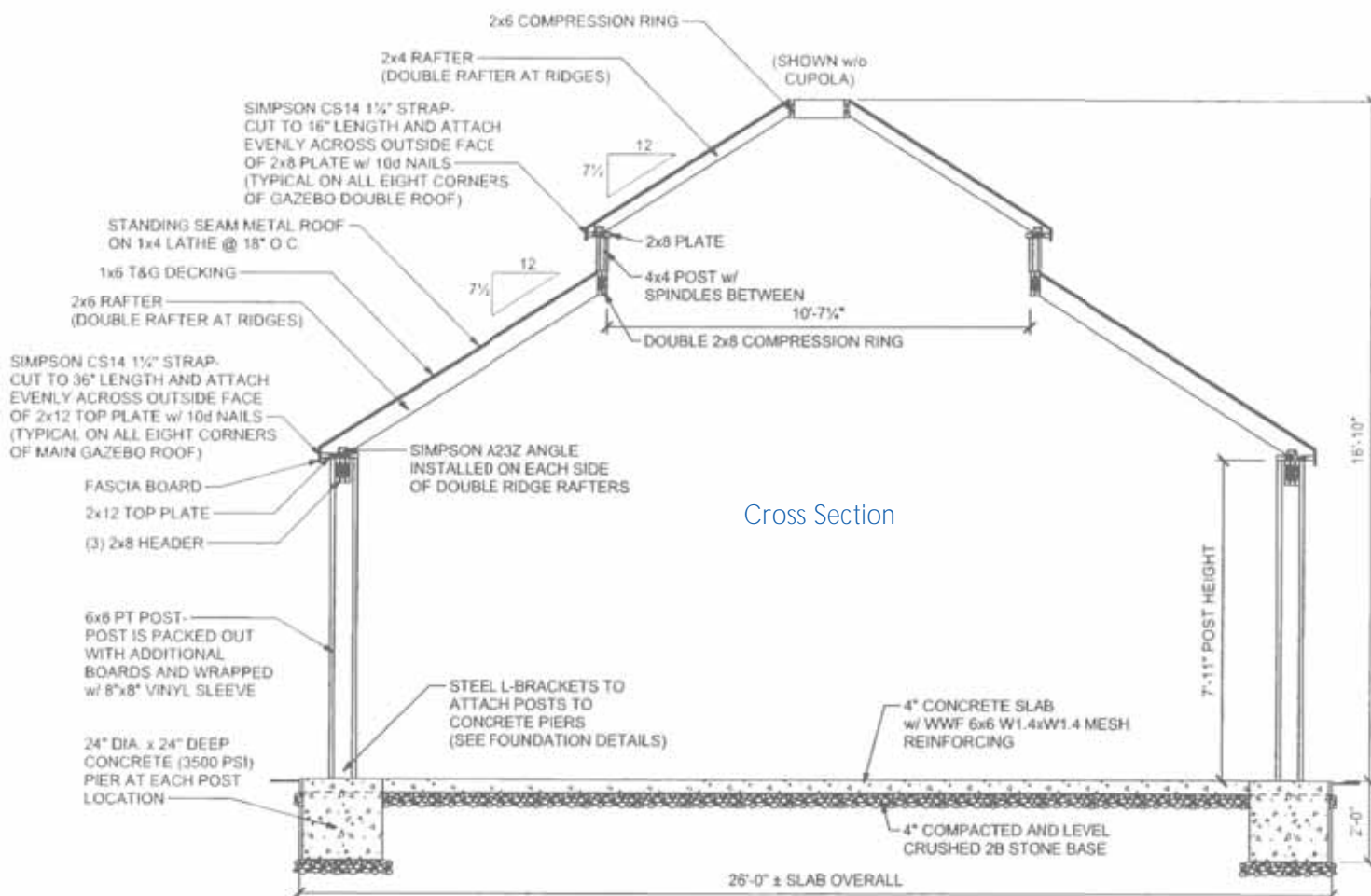
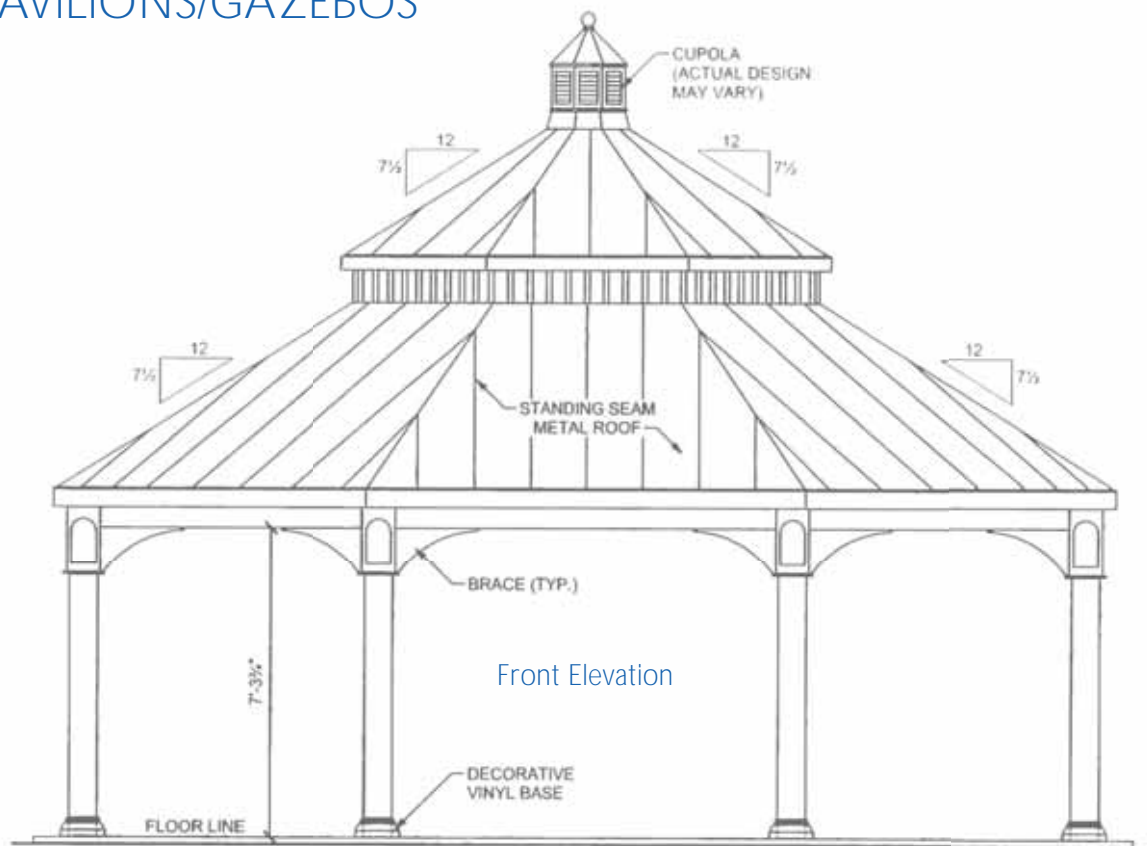
Smithtown, New York is quite a unique area of Long Island. It's only 8 minutes from the Kings Park Railway Station, granting relatively quick access to Manhattan, while also maintaining that country feel with nearby horse farms and vineyards.

Interestingly, we install more pavilions in this area of the country than anywhere else in the USA. Our crews are out this way every week during the season. Believe it or not, this massive backyard pavilion was completed in one day, even with the fancy trim.

Our customers are consistently amazed at how our crews really love to **WORK**. They leave and arrive early - work hard all day in all kinds of weather - and then back to Lancaster only to pick up another load and do it all over again. All with an amazing attitude and careful craftsmanship.



HYBRID PAVILIONS/GAZEBOS





This customer in NC sent us their drawings by their landscape designer that included a 25 foot eight-sided structure. They saw a 25' Gazebo in our Gazebo Catalog but they didn't want railings and wanted bigger posts. We had elevation drawings to them in just a few days. The client and their landscape designer worked together with us to arrive at a final design.

The roof is a unique higher pitched pagoda/gazebo style with standing seam metal roofing on top and stained tongue and groove decking underneath. The posts and brace specifications were borrowed from a popular pavilion design. A local contractor who later finished the patio and masonry prepared the footings. The assembly crew arrived on a sunny Monday morning in October to put together the pavilion and pergola and were headed home Thursday afternoon.

WOOD PAVILIONS

Posts/Columns

Standard: 5" X 5" wood treated posts with trim sets

Custom: upsize 8" posts, superior post skirts (not available on 8")



Roof Overhang/Pitch

Standard: 7" on 8' - 14',
10" on 16' and above.,
6" - 12" over 12" roof pitch



Roofing

Standard: Architectural asphalt shingles,
limited lifetime warranty

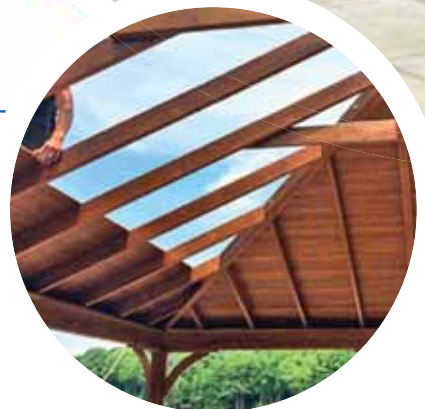
Optional: ribbed metal,
standing seam metal,
cedar shakes, rubber slate



Ceiling

Standard: stained tongue & groove with exposed rafters
with your choice of 6 stain colors

Custom: vinyl bead board or
tongue & groove under rafters



Cupolas

Standard: No cupola

Custom: wood vented cupola , wood glass cupola

- copper, metal or shingle roof
- special order weathervane options available at www.CupolaCreationSpa.com and www.GoodDirections.com

Optional Electric Kit

Includes trim on wood, dual outlet receptacle, fan drop, 3-way switch, and hidden wiring

Anchoring Method

Standard: mounted with 2 heavy duty L-brackets per post, each with ½" x 4" drill-in wedge anchors, covered with post base trim

Beam Height

Standard: 7' - 10"



TRADITIONAL WOOD PAVILIONS



SHOWN ABOVE: 20' X 24' WOOD PAVILION, MASONRY SUPPLIED BY CUSTOMER, GREEN METAL ROOF, CANYON BROWN COLOR STAIN, CUSTOM DESIGNED MOUNTED TO FIREPLACE.



We have an excellent team of skilled craftsmen using modern woodworking machinery. Each pavilion is built with precision, then carefully inspected to ensure it passes our high quality standards.

Your design consultant is your guide to help you reach your goals. You have a variety of colors, styles and options from which to choose.



TRADITIONAL WOOD PAVILIONS



SHOWN ABOVE: 16' X 32' HIP ROOF WOOD PAVILION, WHITE PAINT, SUPERIOR POST SKIRTS



A few miles West of Leesburg, VA off Route 7, the Barns at Hamilton Station is a leisurely scenic drive from the hustle and bustle of Washington, DC and the Capital Beltway. The client wanted a simple durable structure to serve as an event venue situated between their existing historic structure and their vineyard.

TRADITIONAL WOOD PAVILIONS



SHOWN ABOVE: 16' X 18' WOOD PAVILION.





Is Wood For You?

As with any decision - we're here to help you make the best decisions based on what's most important to YOU. While still the same basic wood frame construction and joinery, our wood and vinyl pavilions look and feel very different. You'll find an example of white painted wood on page 41 - but from a photo you can't tell how differently it "feels" in the setting of the historic building from which the top photo is taken. Or next to the vineyard to the right. A vinyl pavilion just wouldn't fit in.

The photo above is in the town square of Schwenksville Borough Pennsylvania. Again, you can't tell in the photos - as nice as a vinyl pavilion could be - the wood compliments the historic surroundings. With our customers - it's usually more about the space and their personal tastes and preferences than the slightly lower cost (than vinyl.) Yes, there is more care involved with a wood structure. But ALL of the wood is pressure treated - so you have the assurance that it's going



to last. And when we say pressure treated - if you missed this on other pages - it's NOT that blue/green material used for fences and decks. This material is a nice blonde color prior to being stained. AND it takes stain right away. Unlike wet treated lumber, this material is Kiln Dried after it's treated, so we can either stain it or paint it immediately.

TRADITIONAL WOOD PAVILIONS





A-FRAME WOOD PAVILIONS



SHOWN ABOVE: 14' X 14' WOOD A-FRAME PAVILION.





SHOWN ABOVE: 14' X 16' A-FRAME PAVILION.

CUSTOM WOOD PAVILIONS



SHOWN ABOVE: 40' X 60' CUSTOM WOOD PAVILION, SUPERIOR POSTS, GREEN METAL DOUBLE ROOF.



Located at the town park in Snelling, SC, this was our third pavilion of a similar design. The other two are at Swamp Mennonite Church in Oxford, PA and Line Lexington Mennonite Church. One of the things that makes these wood pavilions so special is our use of Premium #1 Kiln Dried After Treatment Southern Yellow Pine. You could drive hundreds of miles and not find lumber this nice.





SHOWN ABOVE: 30' X 42' CUSTOM WOOD PAVILION, HIP ROOF, POST SKIRTS.

Crumpin Fox Golf Club in Bernardston, MA needed a quick turnaround on a 30' x 42' wood pavilion. As one of our design consultants shared examples and drawings from our portfolio, he and the client quickly recognized a solution and started building a plan together. Even with the high snow load, we were able to maintain the open-air ceiling and our simple surface mount design.





SHOWN ABOVE: 32' CUSTOM WOOD OCTAGONAL GAZEBO.

Hybrid Wood Gazebo/Pavilion

Larry Kreitemeyer, a retired architect, envisioned a large custom octagon gazebo at the center of his labyrinth of apple trees. Halcyon Days cidery in Natural Bridge, Virginia is just a few minutes from Interstate 81. The summit where the gazebo is located is actually visible from I81 but you have to know to look for it. Inside the cidery is an attractive and interesting display of the labyrinth design. You can't see in the photos, but there is also a labyrinth design in the pavers in the floor of the gazebo.

There are two other examples of this design should you want to see one - both of which are publicly accessible. Stafford Civil War Park in Stafford, Virginia has one. Their team was actually on-site while the gazebo at Halcyon Days Cider was being built. The first gazebo like this we built is at a town park in Tullytown, PA.





SHOWN ABOVE: 35' X 60' CUSTOM WOOD PAVILION, EARTHTONE CEDAR SHINGLES. PAVILION LOCATED IN WADSWORTH, OH.



SHOWN ABOVE: CUSTOM 30' X 30' WOOD PAVILION, BRIGHT RED DOUBLE STANDING SEAM METAL ROOF.



SHOWN: 20' X 40' WOOD PAVILION, CHARCOAL GRAY ARCHITECTURAL ASPHALT SHINGLES, LARGER POSTS WITH STANDARD POST BASE TRIM, A-FRAME ROOF STYLE UPGRADE WITH OPEN GABLES. PAVILION LOCATED IN BOROUGH OF TULLY-TOWN, PA, MAIN STREET PARK.

How Do We Even Know How This Thing is Going to Turn Out?

Looking for a larger structure for your church, event venue, restaurant, or park with durability, appearance and craftsmanship all paramount considerations for your organization?

Here are some of the ways your team can be positive the end result will match your vision.

ENJOY A CURATED SELECTION OF OUR MASSIVE PHOTO AND DRAWING LIBRARY.

SEE ONE OF THE MANY LARGE PAVILIONS, GAZEBO AND PERGOLAS WE'VE BUILT.

SPEAK TO ONE OR MORE OF OUR RAVING FAN CUSTOMERS.

SEE YOUR STRUCTURE IN 3D BEFORE YOU BUY (FOR A REASONABLE COST.)

As assuring as these four opportunities may be, your best resource is your design consultant who knows what questions to ask to understand your unique details and vision BEFORE coming up with the plan to achieve them.

LARGE WOOD PAVILIONS



SHOWN ABOVE: 24' X 60' HIP ROOF STYLE CUSTOM WOOD PAVILION, SUPERIOR POST SKIRTS.

The Town of Newcomb, NY was searching for an impressive and durable structure as a centerpiece for their Newcomb Overlook Park with majestic views of the Adirondack mountains. Their search and final decision was made easier as they reviewed examples from our extensive photo library and drawings on file. We also connected their town board with our municipal clients. The last word from the town supervisor: "Everyone is overjoyed with it."





The Bullis School in Potomac, MD wanted an attractive picnic structure that would blend with the rest of the campus. They had contacted design/build firms, but the pricing was coming in upwards of \$100,000. One of their faculty had seen a similar structure we had built in 2013 for The Penn Foundation and contacted us.



SHOWN ABOVE: THE BULLIS SCHOOL, POTOMAC, MD
30' X 40' PAVILION WITH CLARESTORY

LARGE WOOD PAVILIONS



SHOWN ABOVE: 35' X 60' WOOD PAVILION WITH CLASSIC GREEN RIBBED METAL ROOF



Only 50 miles West of Washington D. C., and 27 miles from Dulles International Airport Purcellville is Horse and Wine Country - Virginia Style. These two photos taken on a bleary day really do not do this serene scenic setting justice. Look carefully and you may be able to see just down the gentle slope is a lovely pond. Off in the horizon you would faintly see the Blue Ridge Mountains. In person - it's unmistakable. You'd experience the drive through the vineyard lined hills and up the narrow gravel road. Western Rural Loudoun County, with its undulating hills and winding roads provides a stark contrast to the Capital Beltway area and bustling suburbia just a short distance away.

With rising demand, we strongly suggest allowing a minimum of 20 weeks from the time your order is placed so we may fit you into our production schedule. There are typically several hundred structures on order waiting to be produced at any given time.



SHOWN ABOVE 20' X 40' WOOD TRADITIONAL MODEL PAVILION WITH HIP STYLE ROOF, 7" POSTS, ARCHITECTURAL ASPHALT SHINGLES, FACTORY STAIN.

Specifiers, owners and project managers...

call on American Landscape Structures to complete their pavilion projects cost-effectively and efficiently. All of our pavilions are fabricated indoors and shipped to the jobsite for assembly with the components pre-cut. The customer handles permitting and completing the foundation – we provide engineered drawings certified in your state.

Because of our focus and experience with pavilions, our clients save thousands of dollars on the design process alone and increase efficiency by allowing the builders to drive the construction details from the beginning.

STANDARD ROOFING

Shingles - Limited Lifetime Warranty Architectural Shingles Standard



Aged Redwood



Charcoal Grey



Driftwood



Dual Black



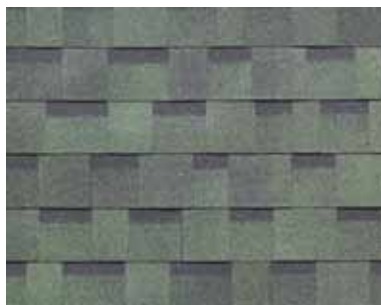
Dual Brown



Dual Gray



Earthtone Cedar



Forest Green



Harvard Slate



National Blue



Riviera Red



Weatherwood

OPTIONAL FEATURES

Stain Color Options (includes water repellent)



Canyon Brown



Cedar



Cinder



Golden Oak



Mahogany



Mushroom

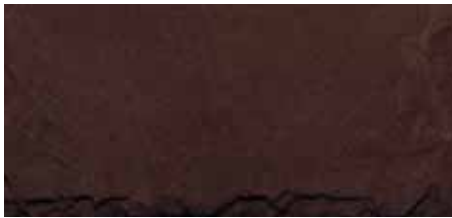
Rubber Slate Shingles



Dark Gray



Green

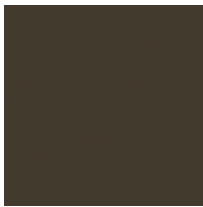


Red

Metal Roofing



Regular Ribbed



Bronze



Evergreen



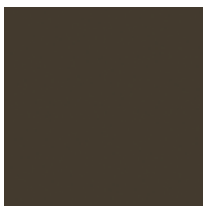
Red



Slate Blue



Standing Seam



Dark Bronze



Classic Green



Colonial Red



Gallery Blue

Other metal colors are available. Ask your design consultant.

POSTS

Vinyl Features



6" Post
(standard)



Superior Post
Skirt
(optional)



8" Square Post
(optional)



10" Round
Column
(optional)



Vinyl Header &
Brackets
(standard)



Vinyl Anchor
System
(standard)

Wood Features



5" Post
(standard)



5" Post with
Superior Post
Skirt
(optional)



8" Post
(optional)



Wood Header
& Brackets
(standard)



Wood Anchor
System
(standard)

Cupolas



Rectangle Vinyl Glass Cupola



Rectangle Vinyl Cupola with weathervane



Square Vinyl Glass Cupola with Copper Roof



Rectangle Vinyl Glass Cupola with Copper Roof



Square Vinyl Cupola



Rectangle Wood Cupola

Additional cupola styles available.

www.cupolacreationspa.com

Available in a variety of sizes and styles.
Additional charges may apply for special orders.

Weathervanes



Patchen Horse



Rooster



Schooner



Soaring Hawk



Smithsonian Eagle



Biplane

Additional weathervane styles available.

www.gooddirections.com

Choose any standard sized weather vane
Additional charges may apply for special orders.



800-478-0905 • AmericanLandscapeStructures.com